

Issued free to members-otherwise 50pence



smoke signal

Number 51, September 2005

Editor Lorna Robson
1 Bournside Road
Tel: 01242 242996

FROM THE CHAIRMAN

Local History Afternoon at Leckhampton Court-2nd July 2005

The Local History Committee of the Gloucestershire Rural Community Council (GRCC) is responsible for an event each year. After many years of wishing to be hosts, Leckhampton LHS were finally able to do so largely due to the generosity of the Sue Ryder Care Hospice allowing Leckhampton Court to be used. After an introductory talk Eric Miller then gave a guided tour of the outer parts of Leckhampton Court. Everyone was impressed with the Court and its history. Other groups visited St Peter's church and the moated site. The tour of St. Peter's was under the guidance of Roger Richards. Everyone thought he gave a very good account of the church and its history. The third group visited the moat with Terry Moore-Scott who told of its early history, the excavations conducted in the early 20th Century and the recent geophysical survey. The afternoon tea provided by the Sue Ryder catering staff was very welcome at the end of the afternoon. We were blessed with fine weather and everyone had a very enjoyable afternoon. The GRCC Chairman communicated his thanks and congratulations to all concerned.

Summer Outing-21st July 2005

Each year we share our outing with Chalton Kings LHS, and it was our turn to arrange the visit. Forty people went on the coach to Malmesbury and Laccock. The weather was fine and warm and most people found something of interest in Malmesbury before having lunch. At Lacock we had a free rein to wander in the Abbey grounds and admire the historic buildings that forever will be associated with the pioneer of photography, Henry Fox Talbot. Lacock village which dates from the Middle Ages is now the property of the National Trust. The stone-built houses, some half-timbered, make the village an ideal film set location

Amy Wollacott

RECENT MEETINGS AND EVENTS

Local History Weekend Emmanuel Church 21st May

Pauline Bradstock had come up with this idea as a fund raiser for the church. I had offered to put together a display about Naunton Park School. It is fast approaching its centenary and I have been collecting material for some years. Each time Pauline contacted me, I reported that "things were coming along well", and "no, there would be no need to worry, everything would be ready in good time!" Well to say that I was burning the midnight oil for the week before the event could not have been further from the truth! But in the end I joined others with displays about the Bath Road, the Church, Cheltenham Collage, the Fairfield Estate, The Potteries and industries in Leckhampton, the School as a VA Hospital in WW1, Naunton Park Recreation Ground and more.

The Church was open on Friday evening and Saturday. About 1000 residents visited the event; some returning twice-there was so much to read. Some will remember the appalling weather that weekend, but everyone who braved the heavy storms thoroughly enjoyed sharing memories, seeing old photos of their locality and friends and reading all the local information on every subject. I found it fascinating to talk to people about their memories of school life. The school will be holding a series of events to celebrate the centenary in 2006.

Thank you to everyone who lent treasured photographs and other material for this event.

It seems hard to believe that six months have passed since the AGM in May and Mary Patterson's wonderful account of her memories of growing up in Leckhampton. I was planning to make some notes for Smoke Signal, for those who missed this not-to-be-missed-event, but I was transfixed from the moment Mary started to speak, so not a word was written-sorry.

Lorna Robson

OBITUARIES

"The deaths have taken place recently of two men who, though they were not members of the Society nevertheless had strong connections with Leckhampton, albeit of very different kinds. One was Fred Read, who had long memories of the area, and who was interviewed for the Society's oral history archive. A few years ago he gave the Society some minute books from the Leckhampton Sports Club, which deal mainly with the cricket section. I hope to summarise these in the next *Research Bulletin*. The other death was of Richard Deobald, of Darmstadt, Germany, who had been one of the inmates at the Leckhampton Court POW camp. He had fond memories of his time here and returned several times to revisit the area and see old friends. I got to know him quite well and we corresponded and spoke over the telephone. Some of his recollections are included in *Leckhampton in the Second World War*.

Margaret Graham, though she did not attend meetings in recent years, was a staunch supporter of the Society. Her late husband, James Graham, had been Chairman of the Parish Council and was also the moving force behind fundraising when the Sue Ryder Home was first opened. Their daughter has given the Society a scrapbook of items relating to the 1977 Silver Jubilee and pieces of correspondence concerned with local planning matters, with which James Graham had been involved. Margaret had also kept a complete set of *Smoke Signals* up to December 2004. If any member would like them, they are available for a small consideration."

Eric Miller

"Is is with sadness that we record the death of Tom Hewlett in August. Tom was a founder member of the Society and served on the Committee as Hon. Treasurer for many years before going to live in Frampton-on-Severn. Our thoughts are with his widow, Gwen"
Amy Woolacott

NEWS

Roger Richards has been in hospital recently and is now back home. We wish him a very speedy recovery and hope that it will not be too long before he is up and about again.

SOCIETY PUBLICATIONS

Research Bulletin No 3 has sold so well that I have had 25 additional copies printed. I also asked for the same number of reprints of *Bulletin* No 1. There are still 40 or so copies of No 2 in stock. The *Bulletins* (all now priced at £3 each), attracted lively attention at the Local History Day at Leckhampton Court and at the Sue Ryder Summer Fair. Sue Ryder Care benefited to the tune of £71, from sales of the *History of Leckhampton Court* and a proportion of proceeds from the sales of *Bulletins* and other History Society publications. On both occasions I also laid on a display of photographs, which always attract interest among visitors.

A tiny handful of copies remain of *Leckhampton in Old Photographs*, *Leckhampton in the Second World War*, *Leckhampton Yesteryear* and *The History of Leckhampton Church* (of which a revised edition is in preparation). *1894 - the End of an Era* has been out of print for some years and there are no plans for a reprint. Copies of these past publications are sometimes to be found in second-hand book shops. If any member comes across one of these rarities - at a reasonable price (!) Please buy it for the Society, which will reimburse you and offer it for resale.

Eric Miller

FUTURE EVENTS

Heritage Open Days in Cheltenham 9th-12th September

Cheltenham College Chapel Bath Road

Opening times Sunday 12.00-17.00

Cheltenham Film Studios Open Day and Jazz Arle Court, Hatherley Lane

These fabulous gardens will be open to the public, with live jazz in the manor house in the evening

Opening times Friday 14.00 Jazz 17.00

St Mary's Church Clarence Street

Photographic exhibition by local history society and organ music at intervals.

Opening times Thursday, Friday 11.00-15.00 Saturday 10.00-16.00 Sunday 10.00-15.00

Guided Architectural Heritage Walk

Cheltenham Tourism 77 Promenade

A guided tour looking at Cheltenham's spa heritage and early 19th century architecture. There will also be an opportunity to see some notable interiors, such as Hygeia House, the oldest surviving spa building (and not normally open to the public).

Walks on Saturday 14.00 and Sunday 10.30

To pre-book, phone 522 878, max. 20 people per walk.

Cheltenham Art Gallery and Museum There are 1hr. behind the scenes tours on Friday 9th at 10.15, 11.45 and 14.00.

Booking is essential on 237 431

To find out more details and the complete list of events look at www.heritageopendays.org.uk

There are two lunchtime talks by Steven Blake entitled Cheltenham's forgotten Spas and Britain's Forgotten Spa: an architectural journey. These are on Monday 19th September and Tuesday 20th September. Tickets cost £5 and must be booked in advance.

Arts and Crafts Day
Friday 7th October

Saturday morning tours/talks in the Arts and Crafts Movement
Gallery start at 11.30 and last about 30 minutes.
These run from October through to 26th November

Tivoli's History Revealed-Illustrated talk by Brian Torode
Hatherley Park Residents' Association
The Meeting Room in St Stephen's Church, St Stephen's Road
Saturday 1st October at 14.00
No charge-Donations to the Postate Cancer Charity welcome.

Anglo Saxon Workshop & Exhibition

At Longlevens Village Hall
Church Rd. Gloucester.

Saturday 24th September 2005, open at 2pm
All welcome-Admission £1, Children-Free

- ✱ Learn about our Anglo-Saxon ancestors and re-create their crafts.
- ✱ Try spinning wool or weaving braids.
- ✱ Displays include-Archery, Armour, Jewellery, Coins, Household Items, Musical instruments and Calligraphy.
- ✱ Hear Anglo-Saxon poetry as the Anglo-Saxons would have heard it.
- ✱ Discover the origin of the names of some of the Gloucestershire towns and villages.
- ✱ Learn how the Anglo-Saxons made bread, rush lights, quill pens, and much more.....

At Cheltenham Art Gallery and Museum there are 1hr. behind the scenes tours on Friday 9th at 10.15, 11.45 and 14.00.
Booking is essential on 237 431

FORTHCOMING SOCIETY EVENTS

15 th Sept	David Elder	Dr. Edward Wilson-Local Historian
20 th Oct	Members' Evening	
17 th Nov	Geoff North	Cheltenham Town Survey
15 th Dec	Tim Porter	Winchcombeshire

MEMBERSHIP MATTERS

As always, guests and prospective members are very welcome at our meetings. However, we do expect residents in the area to join after attending, say, two or three meetings as a visitor. The Membership Secretary, David Lyall (tel.512313), has the necessary application forms.

Back numbers of Smoke Signal are available to members to purchase and we also have a supply of Research Bulletin No. 2 and other local books, which are usually on sale at the monthly meetings or from Amy Woolacott, 15 Arden Road, Leckhampton, Cheltenham GL53 0HG. Tel 522566.

www.lhs.org.uk

The Society's website address is www.geocities.com/LLHSG53 and the e-mail address of our web master is mail@davis127.evesham.net. The Research Coordinator is Eric Miller (tel. 526461) and his e-mail address is miller@leckhampton53.freemove.co.uk.

Data Protection Act. Details of members' names and addresses are stored on a computer file and will be used solely for addressing envelopes for distribution of Smoke Signal and other information and literature. This information will not be divulged to any outside agency.

Copyright. Unless stated otherwise, copyright of articles and illustrations remains with the author or artist concerned or with the Editor. The society does not accept any responsibility for statements and opinions contained in this newsletter, which are those of the author alone, but corrections or additions are invited.

Issued free to members-otherwise 50pence

smoke signal

Number 52, December 2005

Editor: Lorna Robson
Tel: 01242 242996



FROM THE CHAIRMAN

Well, well December already, that has to be a cue for me to wish you all a very merry Christmas and a happy, prosperous New Year.

Our autumn programme began well when David Elder returned to give a most interesting and colourful description of the life of Dr Edward Wilson - local historian and father of the illustrious Dr Edward Wilson - Antarctic explorer. November's guest was also well-known to us. Geoff North brought more revelations from the Cheltenham Town Survey (1855-57). The Members' Evening was well attended and talks were given by Terry Moore-Scott, Eric Miller and myself. Further details of these are to be found overleaf.

Your Committee has arranged an afternoon at our usual meeting room on 9th February for interested members to view some of the pages from our Archive held by Eric Miller. More details will be available at future meetings.

We would like to have more informal Members' Evenings format next April. Members are asked to bring and tell about one item brought from home - be it a photograph, an heirloom Christening gown, grandfather's tobacco pipe, or whatever, with a few minutes to what the item is and why you have brought it along. No need for it to be of Gloucestershire origin. The intention is to sit in an informal circle and when the stories dry up, we can socialize over tea or coffee!

A social evening at The Wheat Sheaf Inn, Old Bath Road, sometime in April to celebrate the centenary of the Leckhampton Stalwarts' fight to keep Leckhampton Hill open for recreation, will go ahead. This is intended to be a Skittles & Refreshments Evening.

RECENT MEETINGS AND EVENTS

Attempts to unravel the intricacies of ploughing practice that produced the familiar 'Ridge and Furrow' patterns to be seen in our fields were described by Amy Woolacot. It seems that there is a wide variation of patterns. Clearly fields last ploughed long ago conform to the pattern described in history books, but later ploughing patterns are less predictable. This might be due to changes from ox-ploughing to use of horses, but the pattern from one field to another is not consistent. Quite why this should be is not yet understood. Measurements of Ridge and Furrow in more fields will continue in the spring.

Terry Moore-Scott talked about his research into the area, west of Gloucester, where he now lives. In medieval times the residents of six neighbouring parishes, including Minsterworth, were awarded special privileges from the land owner, the Duchy of Lancaster. One of these was that they were free from paying any local tolls. We were left to wonder how this might work in modern times. Now there's a thought!!!

Eric Miller spoke about the industries in the local area and his recent good fortune to have been given an old pot from the Charlton Kings potteries.

The weather was dreadful on 17th November and put some members and visitors off coming to hear Geoff North speak about the Cheltenham Town Survey. Geoff was going to take us on a walk around Bath Road! Luckily we were able to remain seated and with the aid of modern technology, (Power point presentation) we set off from the church to Bath Road, stopping at the Five Alls, once The Four Alls, the Corner Shop and other locations before returning to the Church. Geoff's enthusiasm spilled over to his audience and there were lots of questions to follow. He and Elaine had set up their extensive display about the Leckhampton Stalwarts in the meeting room for everyone to view.

● Last Saturday I bumped into Pauline Bradstock, a LLHS member, who had masterminded the Local History Weekend at Emmanuel Church in May. Visitors had been invited to make donations and by the end of the weekend, £500.00 had been raised for church funds.

DATES FOR YOUR DIARIES

20th Dec at 7.30 in the Municipal Offices Cheltenham LHS
Thomas Pickerell-gentleman jockey and Adam Lindsay Gordon.

12th Jan at 7.15 in Thirlstaine Long Gallery, Cheltenham Collage.
Reflections of the Boer War by Col. Christopher Newbould. Details from Mrs J Dixon 01285 654853.

17th Jan at 7.30 in the Municipal Offices. Cheltenham LHS Members' Research and Display Evening. Visitors are welcome.

● until 31st January.

Gloucester Records Office 01452 452295

Clarence Row Alvin Street Gloucester

An exhibition celebrating Admiral Nelson's life 'England Expects'

21st Feb at 7 30 in the Municipal Offices King George 111 and the Royal Visit to Cheltenham in 1788 by Dr Stephen Blake.

MEMBERSHIP MATTERS

As always, guests and prospective members are very welcome at our meetings. However, we do expect residents in the area to join after attending, say, two or three meetings as a visitor. The Membership Secretary, David Lyall (tel. 512313), has the necessary application forms.

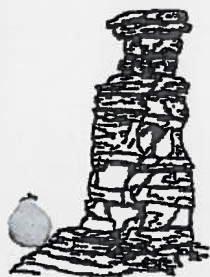
Back numbers of Smoke Signal are available to members to purchase and we also have a supply of Research Bulletin No. 2 and other local books, which are usually on sale at the monthly meetings or from Amy Woolacott, 15 Arden Road, Leckhampton, Cheltenham GL53 0HG. Tel. 522566.

The Society's updated website address is www.llhs.org.uk and the e-mail address of our web master is mail@davis127.evesham.net. The Research Coordinator is Eric Miller (tel. 526461) and his e-mail address is miller@leckhampton53.freemove.co.uk.

Data Protection Act. Details of members' names and addresses are stored on a computer file and will be used solely for addressing envelopes for distribution of Smoke Signal and other information and literature. This information will not be divulged to any outside agency.

Copyright. Unless stated otherwise, copyright of articles and illustrations remains with the author or artist concerned or with the Editor. The society does not accept any responsibility for statements and opinions contained in this newsletter, which are those of the author alone, but corrections or additions are invited.

Issued free to members-otherwise 50pence



smoke signal

Number 53, Spring 2006

Editor: Lorna Robson

Tel: 01242 242996

FROM THE CHAIRMAN

'Somer is ycumen in' Well, not quite yet, but by the time you read this we hope to be well into pleasant spring weather. We are coming to the end of a successful season of interesting meetings; more details overleaf.

At the forthcoming AGM I shall stand down from the post of Chairman - I have already mentioned this fact at our meetings. It was understood from the start that it would be for only one year. It should not be necessary for one person to be both Secretary and Chairman. Of course, this means there will be an urgent need for nominations for someone to fill the post of Chairman; a society without a chairman is like a ship without a helmsman - in serious danger of being wrecked! Unless you want this Society to fold, I urge you to THINK about that possibility. Although nominations usually spring from the Committee itself, this is a pity, as we may be overlooking new talent.

LECKHAMPTON LOCAL HISTORY SOCIETY
Affiliated to Cheltenham Arts Council

Due to our affiliation to Cheltenham Arts Council, we have the duty, shared with Charlton Kings LHS, to send a representative to Arts Council meetings. It being 'our turn' again, committee member Mike Rigby has agreed to fill the post.

RECENT MEETINGS AND EVENTS

December – Tim Porter talked about Winchcombeshire. This small shire existed for a short period in Anglo-Saxon times, but may have been a British realm before about AD600. Nevertheless, it may have come under the rule of the Hwicce by c700, and may have then become the territory of King Coenwulf [Kenulf] within the kingdom of Mercia about 800. After England came into existence, Winchcombe was probably a defended community [*burh*] during the Viking incursions. It was probably designated a Shire by about 1007. By 1017 Winchcombeshire was amalgamated with Gloucestershire, which had been formed c1007.

Our meeting in January 2006 was a very detailed talk by Rev Alan Maunder on the Victorian Churches of Cheltenham. During the early part of the 19thC Cheltenham's population was growing very quickly; so much so that many churches and chapels were filled to capacity. Some schools even became places of worship. By Act of Parliament entirely new churches were allowed, and were built wherever needed. St Paul's, St Peter's, St Luke's and Holy Trinity all date from around this time. The style of building was a hot topic, and the Reverend Francis Close held strong views about church architecture. This was a time of strong Evangelical Church growth, and Francis Close was well known for his colourful, almost theatrical sermons.

Our own member, Cyril Richardson, gave a stirring report in February on the Cheltenham Spa Campaign, which rose to challenge (successfully) the idea of a Cheltenham by-pass using the route of the Leckhampton – Kingham railway line. The line linked Cheltenham Spa station to Kingham and Swindon via Leckhampton. The idea came about when the Kingham Railway Line was closed in 1962. There was something of a public outcry, as the borough council had further ideas for 'modernising' the town; in fact, many historic buildings were swept away in the process. But the Cheltenham Spa Campaign and the Kingham Line Action Group [KLAG]

won their battle to keep something of the Spa's uniqueness, and the town clerk resigned.

On February 9th a large handful of members spent an afternoon in our usual meeting room viewing a selection of archive documents, papers etc. normally held by Eric Miller. It was deemed a moderate success, and it is our intention to have a repeat event possibly in November. The date will be announced in good time.

Our March meeting was a very illuminating talk from Dr Nicholas Herbert on Medieval Towns of Gloucestershire. He described how small towns formed for the purpose of market trading. Using colour slides of maps he showed that medieval towns were in fact planned under a charter from a landlord, such as the Church or from the Crown. New towns sites were chosen with discreet spacing, and with sensible access from surrounding villages, farms, etc.

DATES FOR YOUR DIARIES

Tune into **Radio Gloucestershire** on Sunday 23rd April 2pm-3pm to hear Pete Wilson in conversation with Eric Miller, Amy Woolacot, David Biddle and Eve Andrew. Listeners will be treated to information about Leckhampton Court, the Moat, St. Peter's Church, the Prisoner of War Camp and the Leckhampton Riots. Not to be missed!

18 May AGM followed by a talk from the town crier, Ken Brightwell.

17 June 1.45pm.-5pm Local History Regional Meeting hosted by Frampton-on-Severn LHS. Introductory talk, and guided visits to Frampton Court, or Manor Farm, or the Congregational Chapel. Teas from 4pm in the Village Hall where there will be an exhibition of documents, photos, scrapbooks, etc. Bookings after May 20. Application forms from Amy Woolacott, Leckhampton LHS Sec.

23 August The Joint Summer Outing with Charlton Kings LHS. The coach will take participants to Wilden All Saints Church, near Stourport-on-Severn. The church has 14 Burne-Jones windows. A short talk about the church, coffee & cakes will be offered. Lunch (or sandwiches) will be at Harvington Hall with a tour of the Elizabethan House. Gardens have a moat and water-fowl, and a restored herb-garden.

MEMBERSHIP MATTERS

As always, guests and prospective members are very welcome at our meetings. However, we do expect residents in the area to join after attending, say, two or three meetings as a visitor. The Membership Secretary, David Lyall (tel. 512313), membership@llhs.org.uk has the necessary application forms.

Back numbers of *Smoke Signal* are available for members to purchase and we also have a supply of *Research Bulletins* and other publications, which are usually on sale at monthly meetings or from the Research Coordinator.

The Society's updated website address is www.llhs.org.uk.

The Research Coordinator is Eric Miller, 20 Collum End Rise, Cheltenham GL53 0PB,

Tel 526461 miller@leckhampton53.freemove.co.uk.

Data Protection Act. Details of members' names and addresses are stored on a computer file and will be used solely for addressing envelopes for distribution of *Smoke Signal* and other information and literature. This information will not be divulged to any outside agency.

Copyright. Unless stated otherwise, copyright of articles and illustrations remains with the author or artist concerned or with the Editor. The society does not accept any responsibility for statements and opinions contained in this newsletter, which are those of the author alone, but corrections or additions are invited.

Smoke Signal

Number 54, Autumn 2006

Editor: Lorna Robson
Tel: 01242 242996



FROM THE CHAIRMAN.

I seem to have been here before! While I am grateful to the members for electing me as Chairman for a fresh term, taking over from Amy, who had herself generously occupied the post for a second time, and while I am honoured to do so, I have to state that this will be for a limited period only. In two years' time (if not before) I shall stand down and, while of course retaining an interest in Leckhampton's history, I shall turn my attention to other matters. Moreover, I believe it would be in the Society's interest to be forced to look for 'fresh blood'. In this connection, I am delighted that Professor Peter Simkins has offered to serve on the committee, and he has been co-opted with open arms. We look forward to benefitting from his wisdom and experience gained at the Imperial War Museum.

LECKHAMPTON LOCAL HISTORY SOCIETY
Affiliated to Cheltenham Arts Council

The Society is, to all outward appearances, flourishing and ought to go from strength to strength. The programme of events, the additional activities described on the later pages, and our sound finances should all make us feel optimistic about the future. Our list of publications would be a credit to any similar organisation (and *Research Bulletin* No 4 is a 'gleam in the eye' for late 2007). The publicity gained from the BBC broadcasts, displays at outside events and advertising matter in the St Peter's Parish Magazine and 'Village Voice' ought to bring in some new members. Do tell your friends and neighbours about us.

I look forward to a successful new season.

Eric Miller

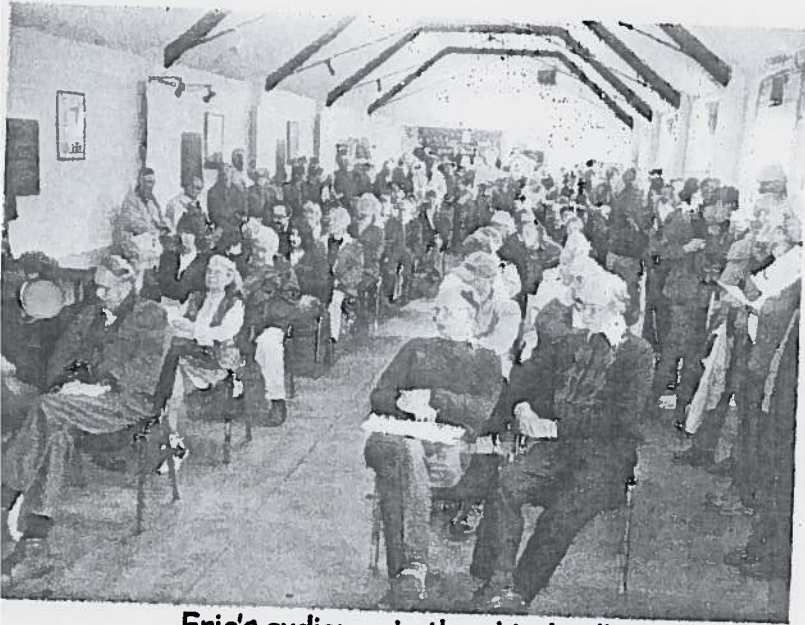
RECENT MEETINGS AND EVENTS

Commemoration of the Leckhampton Riots 16th April

Our commemoration of the Stalwarts' activities in 1906 began on Easter Day at the Wheatsheaf Inn, Old Bath Road, where in the skittle alley the landlord, Maurice Dominie, allowed a gathering of Leckhamptonites to view diverse archive photos and news reports from a century ago. Eric Miller gave a short history of what led to the reading of the Riot Act to an unlawful assembly in 1906 near Tramway Cottage. We all joined in singing the chorus of *The Writ* composed about the troubles at that time. A walk up to Tramway Cottage and on up to the quarries then followed to show that freedom to roam on The Hill exists today as a result of the Stalwarts' actions. As we assembled for the climb, a '1906' policeman aka Richard Williams appeared, and read a suitably modified version of the Riot Act.



Reading the Riot Act



Eric's audience in the skittle alley

Leckhampton on the BBC

Society members have in the last few months made several broadcasts on BBC Radio Gloucestershire. Amy Woolacott, Don Biddle and your Chairman, plus Eve Andrew, contributed to an hour-long programme on 23 April, one of a series on Gloucestershire villages compèred by Pete Wilson. Pete took his cue from the article 'Leckhampton in a Nutshell' printed in *Research Bulletin* No 1, and encouraged the group to speak about all the significant features of Leckhampton and its past. Copies of the recording (with added music!) are available on CD for a small charge.

Your Chairman was involved in two interviews with Alan Morgan, another programme compiler, in connection with the Riots and their re-enactment. This has led to a dramatised version of the story, in which parts were played by pupils from Leckhampton Primary School and the Leckhampton Players.

Members' Evening 20th April

As you will recall, Amy had asked members to bring some item along to this meeting and to share its history with us all. As with all new ventures, you're never sure whether they will be successful or not, but this certainly was! There was a large and diverse collection, ranging from an Iron Age hand tool, a Victorian writing box with concealed correspondence and shop receipts and a map of Cheltenham with Russian street and place names. There was also a bus ticket machine and its owner demonstrated the ingenious ways that it was impossible for the conductor to cheat his company. This was verified by another member who had worked on the Bristol to Cheltenham bus route many years ago. Another member had carried out fascinating research on a diary he'd purchased from a car boot sale. Marilyn West brought some letters written during the First World War (see next page). In total there must have been about fifteen curios for us

to look at and learn about their history. There was just time for a closer look at the objects and a welcome drink and biscuit before we had to leave Church House.

AGM & talk by Ken Brightwell, Cheltenham's Town Crier 18th May
Following a short AGM, Amy introduced Ken Brightwell. Dressed in his splendid robes and hat, he enlightened us on how he had 'applied' many times to be the Town's crier and the varied duties he had been asked to perform. Cheltenham had never had a Crier before and as there was no budget for his regal outfit, Ken had provided his own! There are countrywide and world wide competitions for Town Criers and Ken recalled humorous stories of these events. The evening closed with Ken giving a demonstration of the Cheltenham Town Cry which must have been audible in Painswick Road

Letters to Emma Chapman, brought to the Members' Evening by Marilyn West

Last year I was lucky to be given some letters written by my great aunt, Emma Chapman. She lived at 6 St Philip's Terrace, Leckhampton and later in Gordon Road. The letters, about fifty in all, were from six of her seven brothers who served in the First World War, many of them emigrated to Canada and France at the turn of the last century. Some of the Chapman brothers were musicians who, when they joined up, became bandsmen and stretcher-bearers. Here are a few extracts from some of the letters.

From Pte. George Chapman with 138 Field Ambulance in France dated 14 April 1918. "The weather is very changeable but not very cold. I'm keeping pretty well but shall be very glad to get back for good; it is rather distressing to see the wounded come down when there is a big scrap on. I did what I could for them in the last affair and felt quite

pleased each time we filled up the Motor Ambulance & sent them off for I knew the majority of them would get to England. We have moved on again. I'm off to a place, the name of which will be quite familiar to you & have seen a place of considerable historic interest. I shall be pleased to get the parcel, its not as much the contents that please me but the idea of taking so much trouble to get the stuff and send it.....

Well Old Spud, there is the most infernal rattle going on and it's hard to write a really decent letter. Cheer Oh Keep the home fires burning your loving Bro'."

This letter dated three days later is from Bandsman Wilf Chapman of the 7th DCLI again from France. "The weather is improving & I'm not sorry.... We have had a time paddling about in the mud. We have done some good work since we have been at this hospital. I think George must get sick of his work at times. It isn't the sort of work I should like to be on always. The Padre that censored Reg's letter knew Chelt. pretty well. He told me he married a sister of his at one of the churches in C. a brother of his had a house in Winchcombe. He also mentioned Pitville, Marle Hill and the Promenade. I think he is the only fellow I've met out here who knows Chelt. at all. I have met one or two fellows from the Gloster Regt. One came from Birdlip. When they start ploughing up the Battlefields again out here they'll come across some stuff not flints but bigger. There must be a few tons of metal in the ground now that has been fired from guns.... Some of the eggs that are sent for the wounded have got peoples address on. Two of the add[resse]s were from Dursley, Glos. Hoping that everyone A1 love to all Wilf."

Emma must have sent 'goodies' to her brothers in France. Two months later Wilf writes.... "Many thanks for the box. I enjoyed the

goozie tarts and cake very much. My chum says you make a jolly fine pastry. We share most of our stuff and pool our pay. I was a bit surprised at the box getting here in 4 days. I think that is the shortest time I've known for anything sent from England."

All six of Emma's soldier brothers survived the war. Unfortunately this was not something that many families could say.

A Leckhampton Custom

The following piece appeared under this heading in the November 1860 edition of *Notes and Queries*.

"During the last week a curious custom was exhibited in this village by what is called a 'rough band'. About 10 o' clock in the evening a large number of boys, with kettles and the effigy of a woman, paraded the road leading to the pound with a noisy clattering of pots and pans. I took some trouble to learn the reason, and heard that, on the preceding evening, a man had been locked out of his house by his harsh-tempered spouse. The youth of the village accordingly took the law into their own hands and, as custom directed, dressed out an image of a woman which they conducted with this solemn pomp to the pound where it was, for a short time, imprisoned. It was then taken before the woman's cottage and burned with rustic honours. Can any reader of N&Q give me any history of this custom?
H.S.K.B."

The December issue brought replies, which confirmed that the custom was known elsewhere and had been common use in Surrey and Sussex in cases of wife beating 'not long ago' and was there known as *charivari*. Examples relating to adultery are also mentioned. Another correspondent cites an example of a similar use of ritual shaming near

Sheffield, where the name was *riding the stang*. All examples involved a 'rough band'. The name of the ritual varies. It was *kiddley band* in Cornwall, *skimmity riding* in Dorset *sherricking* in Glasgow and *wooset* in Wiltshire.

This form of community control of disruptive behaviour, with its roots in the distant past, was clearly, at some time, widespread and, seemingly, it worked. One contributor writes

"I believe it to have been a more effective remedy than application to police magistrates."

HSKB, the first contributor, was Henry Spencer Kenrick Bellairs who was, at the time, an Oxford undergraduate living at Ryland Cottage in Leckhampton. His father, Henry Walford Bellairs was living at Rectory House, was HM Inspector of Education and is well known as one of the founders of Cheltenham Ladies' College. HSKB was ordained after graduation and, like many Cheltonians, later spent some years in India. He returned to become a lecturer in the Mahrati and Gujarati languages at Oxford and Cambridge.

Mike Rigby

Terry Moore-Scott has shared an award for an article in the Cheltenham LHS *Journal* about Cheltenham's Theatre Royal. The British Association for Local History award was presented in London. Terry was also one of six finalists for the Bryan Jerrard Award from the Gloucestershire Rural Community Council for his article - *An Historical Look at Leckhampton's Farms* in the Leckhampton LHS *Research Bulletin* No 3.. Terry now lives at Minsterworth, which has stimulated a new area of historical research for him, and the publication of a book about the village.

HERITAGE OPEN DAYS

7th-10th September

Cheltenham Civic Society is sponsoring once again this national celebration of England's architectural heritage.

The leaflet entitled **Heritage Open Days** may be obtained from the Tourist Information Centre and gives more details of each Open Day listed below. Contact them on 522 878

Architectural Heritage Walks

Regency Cheltenham. Saturday Walk 14:00-16:00

Dissent and Conformity. Sunday Walk 10:30-12:30

Both walks start from the Tourist Information Centre and *must be* booked in advance on 522 878.

Cheltenham College Chapel Bath Road

Saturday Self Guided Tours

10:00-16:00

Cheltenham Ladies' College Bayshill Road

Advance booking essential on 520691 ex 2742/2250

Friday guided tours 9:00-12:00

Saturday Guided Tours

9:00-12:00pm. Tours last approx. 1hr

The Synagogue off St James' Square

Sunday self guided tours 11:00-17:00

Everyman Theatre

Friday Guided Tours every half hour

10:00-14:00

Saturday Guided Tours 10:00-12:00.

St. Mary's Church

Self Guided Tours

Thursday 11:00-15:00

Friday 11:00-15:00

Saturday 10:00 - 15:00

Sunday 10:00 - 15:00

Cheltenham Art Gallery and Museum

Self Guided Tours Thursday & Friday 10:00-17:00

Saturday (Guided 1 hr. tours) 10:00 and 14:00

Holst Birthplace Museum

Sunday Self Guided Tours

11:00-16:00

Pittville Pump Room

Self Guided Tours

Thursday 10:00-16:00

Manor by the Lake at Cheltenham film Studios

Arle Court, Hatherley Lane

Sunday Guided Tours of the House and Garden

12:00-16:00

There will be cream teas and a small farmers' market in the afternoon.

DATES FOR YOUR DIARY

21 September Barry Symonds
Brockhampton in the Vale

19 October Members' Evening

25 October Archive Afternoon 14:00 - 16:00
An opportunity to view the Society's archive and photographs.

16 November Philip Moss
Historic Gloucester

Outside events

7 October Annual Local History Afternoon
'Sport in Gloucestershire'
14:00-17:00 at Sir Thomas Rich's School, Longlevens

Talks by Dr Francis Barnes about Robert Dover's Cotswold Olimpick Games which began in 1612 and Hugh Soar on the topic of Archery and the Early Gloucestershire Archery Society. There will be archive photographs celebrating local sports/sportsmen, football/cricket trophies and sporting memorabilia.

11 October Eric Miller
19:30 at St Peter's Church, Leckhampton
'Eminent Cheltonians and their memorials at Leckhampton'

MEMBERSHIP MATTERS

As always, guests and prospective members are very welcome at our meetings. However, we do expect residents in the area to join after attending, say, two or three meetings as a visitor. The Membership Secretary, David Lyall (tel. 512313), membership@llhs.org.uk has the necessary application forms.

The Society welcomes two recent new members: Mrs Janet Harris and Mr Richard Popplewell.

Back numbers of *Smoke Signal* are available for members to purchase and we also have a supply of *Research Bulletins* and other publications, which are usually on sale at monthly meetings or from the Research Coordinator.

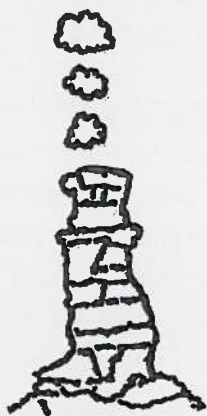
The Society's updated website address is www.llhs.org.uk.

The Research Coordinator is Eric Miller, 20 Collum End Rise, Cheltenham GL53 0PB,

Tel 526461 miller@leckhampton53.freemove.co.uk.

Data Protection Act. Details of members' names and addresses are stored on a computer file and will be used solely for addressing envelopes for distribution of *Smoke Signal* and other information and literature. This information will not be divulged to any outside agency.

Copyright. Unless stated otherwise, copyright of articles and illustrations remains with the author or artist concerned or with the Editor. The society does not accept any responsibility for statements and opinions contained in this newsletter, which are those of the author alone, but corrections or additions are invited.



Smoke Signal

Number 55, Winter 2006

Editor: Lorna Robson

Tel: 01242 242996

FROM THE CHAIRMAN.

The Society is very fortunate in having acquired an assortment of donated or bequeathed memorabilia. These deeds, letters, pamphlets, publications, other documents and photographs are the very stuff of local history. Many of the items are unique, and even if they aren't, it is handy to be able to turn to them when doing research, rather than hunt for them in archives elsewhere. They come with some penalties, though: they take up space and it is difficult to let members see them. The 'archives afternoons' that we have held occasionally are only a partial answer.

I have gradually been depositing items in the county archives, where they will be available to a wider public (though we can always retrieve them if necessary). Where practicable, I have made photocopies, and we have kept indexes and/or summaries of the contents of longer documents. Some years ago, a group of members

LECKHAMPTON LOCAL HISTORY SOCIETY

Affiliated to Cheltenham Arts Council

made card indexes of the 'Bendall Archive'. Lorna is presently transferring these details to a computer, having previously listed the contents of a number of older box files, which were started by Bruce Stait.

The Society's constitution requires it to 'study and publish' the information it collects. Our *Research Bulletins* have fulfilled this aim with spectacular success, but we could do with more contributors. There are several small, self-contained topics that would be suitable, such as the Cricket Club, or some of the contents of Robert Cary Barnard's notebook. These would sit happily in the next Bulletin. If anyone is tempted, please get in touch, and we can discuss how best to go about it.

In the past we may have overlooked the northern part of the historic parish of Leckhampton, which extends as far as the Exmouth Arms in Bath Road. Following Michael Dower's presentation at the members' Evening on the St Philip and St James's Area Residents Association (see below), we have been invited to join them in setting up a historical display and linked publication that they are planning. Amy and I are about to attend a meeting with them to discuss possibilities, and one of their representatives will attend our next committee meeting. This closer collaboration could prove to be of mutual benefit to the two organisations.

Eric Miller

RECENT MEETINGS AND EVENTS

Summer outing with Charlton Kings Local History Society

Wilden All Saints is a late 19thC brick-built church with surprising treasures inside. We had some welcome refreshments followed by a comprehensive talk on the church's 'life' and those who have loved it. Alfred Baldwin, manager of Wilden Ironworks, built the church for his workforce. He married Louisa Macdonald and their son Stanley later became Prime Minister - three times! One of Louisa's sisters, Georgiana, married pre-Raphaelite artist Edward Burne-Jones, and another, Alice, married John Lockwood Kipling; their son was Rudyard. The church windows, originally of plain glass, were replaced in 1914 with ones designed by Burne-Jones. William Morris designed a goldthread altar frontispiece, and many other treasures were also on display. We ended with a happy tale about a lowly cowman Thomas Jones whose substantial savings all went to the church and school. His final wish was that the school-children should visit his grave on his birthday and 'sing happy songs'

Harvington Hall is a Tudor red brick manor house of two four-storey towers linked by a double-storey range sitting peacefully on moated land. There is no indication of the intricate maze of rooms within. The house features Elizabethan wall paintings, and is associated with the religious persecution of Catholics, having more priests' hiding-places than any house in England.

Our green-cloaked guide regaled us with historical details, and the occasional hint of gossip about the three families that have made Harvington history. The Pakingtons built much of what we see today around 1585, the same year that an Act of Parliament forbade Catholic priests setting foot in England. In 1659 ownership transferred to Humphrey Pakington's heir Lady Mary Yate who lived to be 85. Over the centuries many alterations were made to the Hall,

some of them by the Throckmorton family who were there from 1701. The knot-garden incorporates the initial letters of these three families.

The Hall is famous for its priest-holes - all constructed by Nicholas Owen who was born in 1562. He used carpentry skills to make the priest holes. Nicholas altered floor levels, introduced split-levels; tunnelled into walls, then restored the outer surfaces ingeniously to conceal the hiding places that he built until about 1602. Nicholas was eventually captured by Protestant soldiers and tortured at the Tower of London.

BROCKHAMPTON IN THE VALE

The talk grew from Barry Symonds's intention to write one page about the history of this hamlet of 20 houses for The Swindon Village Collection!

However, this led to research on history of the manor of Southam. This was traced from Domesday to Miles, Earl of Hereford who left the manor to his two daughters, which effectively divided it in two. The talk followed the progress of each via the Baghots, Huddlestones, Delaberes, Cecils and many others until it was reunited under Lord Ellenborough and finally Mrs Costa. More research led to the discovery of the Saxon charters of 768 and 799 which established the monastery at Cleeve and designated boundaries. These charters mentioned tumuli and barrows near Brockhampton. This led to the finding of the old Saxon name Lowdilow Lane on a road at Stoke Orchard.

Mention of tumuli in turn led to investigations into the pre-Roman history of the area and finding that agriculture started there in about 3500BC. Most of the woodland was cleared by 500BC, hence the need to rewrite the start of the talk on the history of Swindon Village.

Barry concluded this fascinating illustrated by saying that it showed how you can start research on simple local history project and can finish up 3500 years away and in a different place entirely!

MEMBER'S EVENING OCTOBER

Roger Richards told us about his very worthwhile and time-consuming task of making an alphabetical list by surname of burials in St Peter's churchyard, following in the footsteps of Leonard Barnard whose list ended with 1913. In addition to burials listing, Roger is including addresses, age and grave number and making cross-references to confirm details.

Mike Rigby talked about a project to conserve Jenner Gardens adjacent to the bowling green at St George's Square. The gardens were originally the graveyard of Cheltenham Chapel built in 1810 to ease overcrowding at the Parish Church but, unusually, the Chapel was non-denominational - any preacher could visit. By the late 1800s, new churches in the town took interest away from the Chapel, with the last burial in 1893. After then, the graveyard slowly became neglected. The link with Jenner is due to the use of the chapel for vaccinations for the townsfolk and Spa visitors. The site had been acquired by Cheltenham Borough Council in 1987 and The Friends of Jenner Gardens have a plan to turn this site into tranquil place for everyone to enjoy.

Eric Miller highlighted his research into the (fortunately abandoned) plans for a Manchester - Southampton Railway. Robert Stephenson's plans in 1845 would have taken the line through Colesbourne, Cowley, Coltham Fields and Prestbury. Modified plans showed a line passing through Southfield Farm and Old Bath Road and would have cut a large swathe through Church Road and adjacent areas. Eric has found details of such local sponsors as CB Trye, and Pearson Thompson in the Gloucestershire Archives. If

the railway had ever been built it would have passed through a 300-yard tunnel at Coberley, and beyond Prestbury would have joined the Birmingham Line near Lansdown Station. The Banbury & Cheltenham Railway did pass through Leckhampton Station, as did the Southampton trains using the Midland & South Western Junction line from Andoversford to Andover.

Michael Dower talked about St Philip & St James's (Leckhampton) Area Residents Association - a relatively new group focussing on the historic aspects of the area around Painswick Road, and the route of the Leckhampton Hill branch of the Gloucester & Cheltenham tramroad. Next year the group intends to put on an exhibition of 'Then & Now' based on photographs and reminiscences. (Our Society has agreed to collaborate in this.)

Amy Woolacott set up the display that was shown at the Local History Afternoon on 7th October. It was based on old photographs with a sporting theme. We are lucky to have many photos collected by Bruce Stait, and more recently by Alan Gill. Our numerous publications were also a useful source.

The Local History afternoon had a sporting theme partly spurred by London's bid for the 2012 Olympics. But 2012 is the 400th anniversary of the Cotswold *Olimpick Games* initiated and financed by Robert Dover, and still celebrated on Dover's Hill near Broadway. In the 17th C Dover sounded a bugle for the start of activities, which included wrestling, bare-fist boxing, archery, and swordplay. For the better off, there was horse racing, greyhounds and harriers chasing a hare.

THE HISTORY OF GLOUCESTER

Our November quest speaker was Philip Moss, a well-known historian in the City of Gloucester. His talk with slides - Hidden History of Gloucester - revealed much of what lies unseen; ancient timbers in

loft spaces, medieval stone arches of under crofts in cellars, or even beneath our feet, a pavement metal plate (sadly now lost) marking the entrance to a WWII Air Raid Shelter. In many instances, access has been given to the City Civic Trust so that accurate surveys can be made. Philip described what has been found in some properties in Southgate and Westgate Streets. Despite modern facades, many buildings have much older features inside or behind them. In former inns that are now shops and earlier shops that are now private residences or offices, oak panelling and highly decorative plasterwork has been found in great quantity and even some rare examples of wall paintings. There were inevitable references to hidden tunnels and ghostly appearances. But the most modern hidden history has to be the Time Capsule within the plinth of Emperor Nerva's statue erected to make the start of the third millennium.

OBITUARIES

Members will be sorry to learn of the death of Sue Stark, after a valiant fight against cancer. We offer our condolences to Bob and his family.

We were also shocked at the death of John Milner, who had for so long been an inspiration to anyone interested in the history of the area. He had lectured widely, but our Society was lucky to hear him talk about Leckhampton Hill, Naunton Park and Fulwood Park, as well as on Liddington Lake, an article on which enhanced our first *Research Bulletin*. His genial presence will be greatly missed.

Daphne Oliver (née Hicks) sadly died in June. She gave the Society a number of photographs relating to Leckhampton Farm, where she grew up, and also some interesting reminiscences which appeared in

'Leckhampton in the Second World War', from which the following extract is taken:

"Daphne Oliver, then living at Leckhampton Farm, remembered that for the first few months of the war little changed, except for the need to comply with the blackout regulations. Hurricane lanterns were used in most of the farm buildings; there was no electricity or mains water in those days. She also recalled that the first Land Army girls joined them and mostly helped in the dairy, milking the cows (by hand) and delivering milk on the rounds, which were rationalised to minimise travelling. She also recalled how a local 'War Ag' group (Agricultural Executive Committee) was formed. Its members supervised the farmers and quotas for corn, potatoes and milk production. They also had the power to requisition land which was not being properly managed. In 1941, Leckhampton Farm grew its first corn since the First World War. One of Daphne's most vivid memories was that of the continuous drone of seemingly unending lines of planes towing gliders the three white stripes on their wings clearly visible - on the day of the D-Day landings."

'THE HISTORY OF LECKHAMPTON CHURCH AND ITS PARISH'

Your Chairman has devoted much of the past twelve months to revising and expanding his History of Leckhampton Church. Twenty years had elapsed since the first edition, and the need for a reprint presented the opportunity of making revisions and additions. These are partly the result of continuing research but also of fresh material that has come to light, in particular some missing Vestry minute books covering the years 1869-1940. As a result, the book has been extensively rewritten. Most of the illustrations are new to this edition. As well as photographs, they include some rarely seen drawings and engravings showing the church and its interior as they appeared in the 18th and 19th centuries, while on the cover there is an up-to-date full-colour photograph of the building.

Of wider interest is a chapter on the people of note that are buried in the churchyard. Everyone with an interest in the area's past should have a copy, and although it is not a Society publication, it is available to members at the bargain price of only £2.00.

(An internet bookshop is currently advertising copies of the first edition at £11.95!)

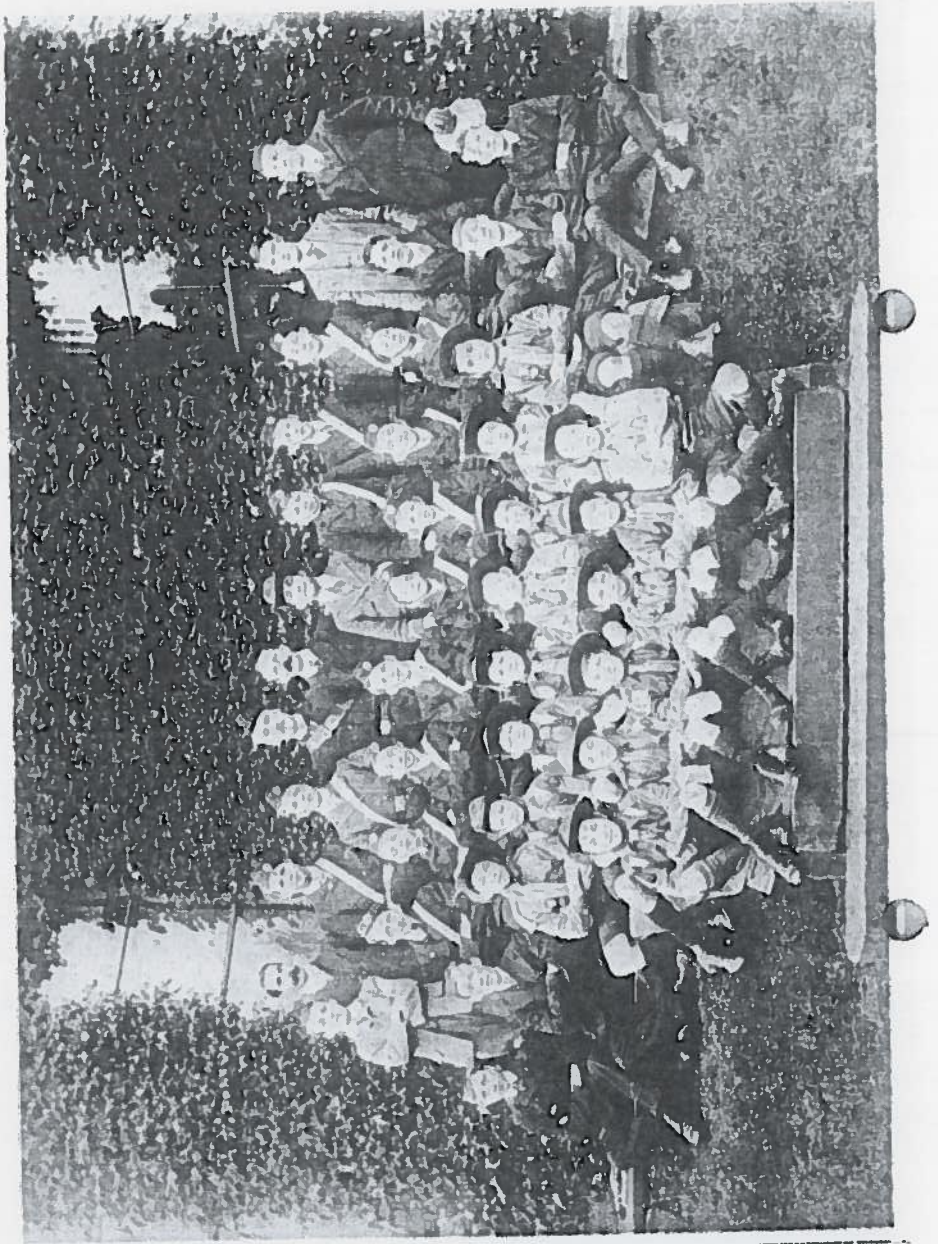
REPRINTS OF PAST SOCIETY PUBLICATIONS

Further copies of *Research Bulletins* Nos 1, 2 and 3 have been printed, which members may purchase for £3.00 each, regardless of the original cover price. This has been done thanks to Mike Rigby's printer, now trading as CGI Digital, which has produced our last two Bulletins and the Church History. In the circumstances, we may ask for a few extra copies of other earlier publications, such as '*Leckhampton 1894*' and '*Leckhampton Yesteryear*'. (Would anyone who is interested please let Eric Miller know.)

LECKHAMPTON CHURCH LADS' BRIGADE AND SCOUTS

Tony Clifford, of the Leckhampton Scouts, has brought me a copy of a photograph of the Leckhampton Church Lads' Brigade and Scouts taken in 1910. All the boys and their leaders are named. The teen-age Alf Bendall is there, and several boys who later fought in the First World War, in which Harold Summers and Gilbert Hunt lost their lives. Among the leaders is Leonard Barnard, who later designed the Parish War Memorial, on which their names are engraved. The photo on page 10 has been added to the Society's archive and will appear on the church website, www.stpeters-leckhampton.org.uk.

Eric Miller



DATES FOR YOUR DIARY

NB MEETINGS WILL NOW BEGIN AT 8 PM NOT 7.45

18 January Air Commodore G Pitchfork
Aviation in Gloucestershire.

15 February Giles Brown
Gloucestershire Place-Names: especially Whittington, Sevenhampton
& Brockhampton.

15 March Gloucester Archives Office
The Home Front in Gloucestershire in World War Two.

FROM THE EDITOR

Thank you to Amy and David for sending me the details of the Members' Evening and Novembers' meeting. Thank you also to Barry Symonds for the précis of his talk. All that is left to say is to wish everyone a Happy Christmas and a Historical New Year!

MEMBERSHIP MATTERS

As always, guests and prospective members are very welcome at our meetings. However, we do expect residents in the area to join after attending, say, two or three meetings as a visitor. The Membership Secretary, David Lyall (tel. 512313), membership@llhs.org.uk has the necessary application forms.

Back numbers of *Smoke Signal* are available for members to purchase and we also have a supply of *Research Bulletins* and other publications, which are usually on sale at monthly meetings or from the Research Coordinator.

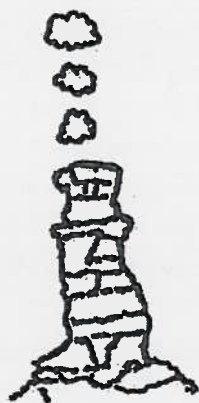
The Society's updated website address is www.llhs.org.uk.

The Research Coordinator is Eric Miller, 20 Collum End Rise, Cheltenham GL53 0PB,

Tel 526461 miller@leckhampton53.freemove.co.uk.

Data Protection Act. Details of members' names and addresses are stored on a computer file and will be used solely for addressing envelopes for distribution of *Smoke Signal* and other information and literature. This information will not be divulged to any outside agency.

Copyright. Unless stated otherwise, copyright of articles and illustrations remains with the author or artist concerned or with the Editor. The Society does not accept any responsibility for statements and opinions contained in this newsletter, which are those of the author alone, but corrections or additions are invited.



Smoke Signal

Number 56, Spring 2007

Editor: Lorna Robson
Tel: 01242 242996

FROM THE CHAIRMAN.

Your committee has several times debated how it might use some of the money in the reserve fund to the benefit of the community, in accordance with the society's constitution. Last November its members agreed unanimously that it would be appropriate to donate a sum of £500 to Leckhampton Primary School in order to help foster the pupils' awareness of History. The Headmaster, Peter Gardner, and Head of History, Hannah Cottell, were extremely grateful for the offer, and members of staff drew up an extensive 'wish list' of extra sources, teaching aids and materials. An amount has also been set aside for prizes for the children's final-year projects. Hannah wrote: 'I can't express how grateful we are for your contribution. It will be invaluable to the children's experience of history.'

LECKHAMPTON LOCAL HISTORY SOCIETY
Affiliated to Cheltenham Arts Council

The reserves have accumulated almost entirely thanks to sales of the society's publications, and it is gratifying to be able to pass on to the youngsters of Leckhampton the results of our previous efforts.

Among other worthy causes that we are considering for the future is an appeal from the Cranham LHS, who have ambitious plans for an aerial survey using a new technique that is able to detect features of archaeological interest even where trees are growing on the surface. If the survey goes ahead - much depends on the promise of financial backing - it will cover an area from Stroud in the south to just beyond the northern slope of Leckhampton Hill. Thus, our members would benefit from potentially unique data not only on the Iron Age fort but also on the industrial workings of the quarries and the associated tramway.

Eric Miller

RECENT MEETINGS

December: Gloucestershire's Industrial History

Gloucestershire is a county with a diverse industrial heritage and fortunately, there is so much evidence for us still to see. Dr. Ray Wilson took us on an interesting illustrated tour of the area, starting with Abbey Mill in Tewkesbury. The original mill is thought to date from around 1190. The mill features in the famous nineteenth-century novel by Mrs Craik, *John Halifax, Gentleman*.

Following on from the slides of the brewery and Telford Bridge, we stopped at the Stocking Frame Knitters' Cottages in St. Mary's Lane. The Civic Trust has restored this three-storey building with its large upper floor windows. Combe Hill Canal played an important part in the 1780s, carrying building materials to Cheltenham. This was abandoned in 1876 when floods swept away the lock gates. The site is now a nature reserve.

In the Forest of Dean, we viewed slides of Darkhill Ironworks, Bromley Hill Iron Furnace and collieries including Dodmore Collorley Ventilation Chimney. Black slag blocks have been used in the construction of a couple of houses in Newnham. These blocks came from the copper smelters of South Wales.

There are many publications available to guide the visitor to these and many more industrial sites. So when the summer comes we'll be off to explore.

January: Aviation in Gloucestershire

The Gloucestershire countryside is peppered with artefacts from the Second World War. Air Commodore Graham Pitchfork gave us a fascinating illustrated guide as to their whereabouts at our January meeting, starting with an aerial view of the skilfully disguised airfield at Moreton-in-Marsh.

At Honeybourne Airfield, a control tower is now a designer-style home. At Willersey there is a memorial stone bearing the name of one of the Dambuster flyers and at Springhill, a small hanger now houses modern gliders. The training base for bomber pilots at Moreton-in-Marsh is now used by the National Fire College. The Wellington Aviation Museum, dedicated to all who passed through the R.A.F., is here too.

There are disused airfields at Little Rissington and Bourton-on-the-Water. In the church at Little Rissington there is a stained glass window in tribute to the Air Force. At The Lamb Inn at Bibury, there is a blade from a Hurricane Bomber in the bar. At Broadwell, a watchtower remains. The Broadwell airfield was the main launch area for the Normandy Landings. Planes returned here, carrying the wounded from Normandy. The nurses who cared for them were aptly called Flying Nightingales.

At Rendcombe, a WW1 airstrip is still visible. In Down Ampney Church, there is a stained glass window to commemorate the R.A.F. men who were based here. The Army now uses South Cerney airfield. The hangars at Kemble used to house The Red Arrows.

Closer to home, there is The Air Balloon, its name commemorating John Hampton's hot air balloon/parachute ascent from Montpellier Gardens in 1838. The Regent Arcade stands on the site of the Regent Garage where George Dowty built the undercarriage for the first jet aircraft in 1941. The model brass aircraft in the Arcade commemorates this fact. The Gloster Aircraft Company, formed in 1917, rented what was the Sunningend works of H H Martyn in Cheltenham. As orders for aircraft increased, other companies in the Gloucester and Cheltenham district were contracted with work.

Two Cheltenham men played a significant role in the offensive against Germany. They were Arthur Travers Harris (Bomber Harris) and Squadron-Leader R.W. Reynolds, who led the first daylight raids on Berlin. Stoke Orchard was home to Amy Johnson, (first woman to fly from Britain to Australia) for three years.

Members recalled the name Alan Cobham, an English aviation pioneer who started The National Aviation Day displays in 1930s. He toured the country, calling at hundreds of sites, some of them regular airfields and some just fields cleared for the occasion. Generally known as "Cobham's Flying Circus", it was hugely popular, giving thousands of people their first experience of flying, and bringing "air-mindedness" to the population.

Wellington Aviation Museum Entrance fee: - £2.00

Opening times:-10 00am-12.30pm - 2.00 -5.00 pm (not Mondays)

Telephone: (01608) 650323

March: The Home Front in Gloucestershire in WWII

Gill Schonk of Gloucestershire Archives gave a very informative and entertaining presentation, showing photographs and documents illustrating local everyday life during the Second World War. There were letters from local authorities detailing arrangements for receiving and billeting evacuees, pictures of gas masks, ration books and identity cards, and a report of an air raid wardens' exercise in Gloucester during which one of their number was shot by a trigger-happy member of the Local Defence Volunteers, the forerunner of the Home Guard!

Photographs included posed pictures of the L.D.V. and Home Guard, evacuees being met at railway stations, the destruction of Stoneville Street on 11th December 1940 and of Pilley Bridge (which carried the Old Bath Road over the Kingham line). There is much more material being collated, and a second showing would be welcomed.

DATES FOR YOUR DIARY

LLHS AGM, 8 pm, Thursday 17th May, followed by talk on Music & Songs of Gloucestershire & the Cotswolds - see separate notice

Local History Fair on Sunday 10th June at Speech House when The Forest of Dean Society will be celebrating its 60th anniversary.

The LHS Regional Meeting will be on Sunday 17th June in the historic wool town of Tetbury. Introduction in the Market Hall. Three guided walks - around town centre, the church of the St Mary (225th anniversary) or St Saviour's Chapel of Ease. Tea and viewing of the exhibition will end at 5pm. Reservation forms from Amy Woolacott.

LLHS & CKLHS Summer Outing to Alcester & Coughton Court, Thursday 19th July - see separate notice

Local History Exhibition

The Society is working with the St Philip and St James Area Residents' Association on plans for an Exhibition and events related to the history of the area bounded by Suffolk Road, Bath Road, Shurdington Road, The Park and Park Place. The Exhibition will be held in St Philip and St James's Church on Thursday 21st to Saturday 23rd June. Talks are also planned for the evening of Friday 22nd. The organisers will welcome input to the exhibition from members of the society. In particular, we would welcome photographs of buildings and streets in the area from former years; photographs of people and places, from family photo albums; records of trades and businesses that used to exist in the area, deeds of houses; things that were made or sold in the area, or invoices, bills, advertisements and the like, and artefacts, such as beer bottles from the former Grafton Brewery. We will welcome written or oral memories of people and events in the area, such as parties for the Coronations of 1937 or 1953 or the Jubilee of 1977. Any precious things will be copied and returned safely to you. If you have things to offer, please contact Michael Dower, 56 Painswick Road, tel: 226511, e-mail mdower@glos.ac.

Naunton Park Primary School Centenary Exhibition 9th-13th July. Memories and offers of memorabilia to loan will be very welcome. Contact Sue Staniland or Hilary Waring at the school for further details - tel: 513114. The school is putting together an impressive display of photographs, schoolbooks, etc to show school life through the decades. The School was used as a Voluntary Aid Hospital during the First World War and we are very grateful to Elaine Heasman and Geoff North for the loan of their display.

SUMMER OUTING

This year's joint outing with our friends from the Charlton Kings LHS will take us to Warwickshire. We shall go first to the historic Old Town Hall in Alcester, where we will be welcomed by the Chairman of its Local History Society and the Director of the Roman Museum. After coffee and biscuits we shall be able to take a self-guided tour of the town's places of interest (or, if it is wet, we shall have an illustrated talk); in either case, we shall be able to visit the Museum. Members will probably prefer to make their own arrangements for lunch, which can be taken at any of the several cafés or pubs, or there is a nice picnic site near the river. In the afternoon, we shall visit Coughton Court, a charming National Trust property with links to Leckhampton Court through the Throckmorton family. Its garden alone is worth the visit. There will be time for tea in the cafeteria before our return. If you are interested, please fill in the enclosed booking form early to be sure of a place. As we are the 'host' organisation this time, I hope more will take part than last year, when we mustered only single figures.

Eric Miller

OBITUARIES

Our member Mrs J D (Micky) Warmingham died at the end of last year. Although she seldom came to our meetings, she was a stalwart at the Local History event each October, and was well known to many people as secretary of The Gloucestershire Family History Society.

MEMBERSHIP MATTERS

As always, guests and prospective members are very welcome at our meetings. However, we do expect residents in the area to join after attending, say, two or three meetings as a visitor. The Membership Secretary, David Lyall (tel. 512313), membership@llhs.org.uk has the necessary application forms.

Back numbers of *Smoke Signal* are available for members to purchase and we also have a supply of *Research Bulletins* and other publications, which are usually on sale at monthly meetings or from the Research Coordinator.

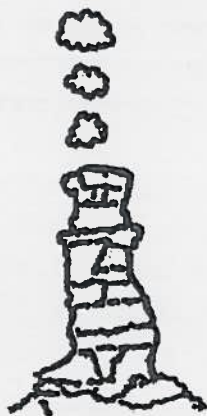
The Society's website address is www.llhs.org.uk.

The Research Coordinator is Eric Miller, 20 Collum End Rise, Cheltenham GL53 0PB,

Tel: 526461 e-mail (please note new address): ehmiller@talktalk.net

Data Protection Act. Details of members' names and addresses are stored on a computer file and will be used solely for addressing envelopes for distribution of *Smoke Signal* and other information and literature. This information will not be divulged to any outside agency.

Copyright. Unless stated otherwise, copyright of articles and illustrations remains with the author or artist concerned or with the Editor. The Society does not accept any responsibility for statements and opinions contained in this newsletter, which are those of the author alone, but corrections or additions are invited.



Smoke Signal

Number 57, Summer 2007

Editor: Lorna Robson
Tel: 01242 242996

LECKHAMPTON LOCAL HISTORY SOCIETY
Affiliated to Cheltenham Arts Council

RECENT MEETINGS

Bring & Tell Evening 19th April 2007

Amy opened the event with her model of The Devil's Chimney. "I'm sure there is not one person here who does not know of the Devil's Chimney. It is our Society logo and features on some of Cheltenham's tourist literature. However, this model is almost unique, having been created in a very limited edition by Bruce Stait, who many will remember was one of our Society's founders. He had a kit for making moulds using a latex solution, and being creative, he built a small replica of the Chimney using Leckhampton Hill limestone from which a small number of copies were cast.

But what do we know of the Chimney itself? The stone is about 150 million years old, but when was the Chimney built, if indeed it was built?

In 1897, a geologist called Buchan wrote that cliff-face quarrying began 400-500 years earlier. In 1803, the 'chimney' was described as 'a craggy form built by preternatural hands'. Some say quarrymen built it; others suggest that it was merely left during quarrying to give stability to the light railway for trucks of quarried limestone down the hill.

A local custom used to be to climb to the top of the Chimney and throw down a coin - for luck. The local historian, the late David Bick, produced numerous books about the Leckhampton quarries, and his research has been most useful in learning more about our famous landmark".

Other items included a set of manilas. These were West and Central African copper/brass bangles and were used as currency by slave traders, for jewellery and musical instruments. We passed around an 1840's pottery spittoon from a Ledbury public house, blacksmith's pincers from two hundred years ago, old maps of Cheltenham and Bristol and a ceramic invalid feeding cup. We listened to excerpts read from The Tea Table Almanac from Rose James and Co, London 1879 and the wills of a Minsterworth yeoman in 1620 and Sir Henry Knight from Shropshire in 1520. This fascinating evening was rounded off with refreshments and an opportunity to socialise.

A.G.M. followed by John Poulter - Music & Songs of Gloucestershire & The Cotswolds

Eric Miller chaired the AGM on 17th May. The main points from the meeting were that the annual subscription is to remain unchanged and that Mike Rigby will be Vice-Chairman next season and will be proposed for election as Chairman in 2008-2009.

An evening of jolly entertainment followed the 15th AGM at the close of our programme. Tony Poulter, Captain of The Gloucestershire Morris Men, demonstrated some of the Music & Songs of Gloucestershire for well over an hour.

Members were highly entertained by John's excellent musical skills, acting performance and humorous stories. We learnt about the history of Morris dancing and John sang some of the songs that had been altered over the years to be appropriate to Gloucestershire. History echoes in the songs about the countryside, industry, the state and crime and punishment. Tony used his melodeon, a double-reed accordion, to colour his songs, and we were invited to sing along with the popular choruses.

Painswick Road Residents' Association History Weekend

The inclement weather of the 21st, 22nd and 23rd June did little to dampen visitors' enthusiasm as they came to St Philip and St James's Church to find out more about the history of their neighbourhood.

The event was the result of many months of research and preparation by the Painswick Road Residents' Association.

A large audience enjoyed the Friday evening talks by Amy Woolacott, Eric Miller and Michael Dower. On Saturday afternoon, the rain held off a little to allow pupils from St. James's Primary School to dance around their maypole in the Church car park. Amy and Eric led a short tour of the local area too.

The church and aisles were full of exhibits. The Association has prepared display boards, which detailed the local history in chronological order. There were memorabilia from St James's Primary School and work done by pupils at school now, including clay models of Bath Road shop fronts and written comparisons of life in the area. The landlord of The Brown Jug in Bath Road kindly lent artefacts from his cellar.

There were also excellent displays put together by the Cheltenham Local History Society and Leckhampton Local History Society. These will be given another airing at the Society's Members' Evening in October, together with shortened versions of the talks.

Summer Outing to Alcester and Coughton Court

Our annual summer outing on July 19 jointly with Charlton Kings LHS was to the dual delights of attractive Alcester and Coughton Court. The weather was kind, with long sunny spells - such a blessing in view of the torrential rain and floods that came on the next day.

On reaching Alcester, we gathered in the Town Hall (actually the old Market Hall) and had a short introduction to the town from members of The Alcester & District LH Group. This was followed by some very welcome refreshments, after which, time was our own to explore the town. We were given two walking guide maps to help us discover Alcester's layout and history.

The church of St Nicholas has the ornate tomb of recumbent Sir Fulke Greville, with lion at his feet, and his wife Elizabeth. He funded building of the old Market Hall that was completed in 1641.

An unusual feature of the town is the 'turies' - long narrow passageways between buildings, many of which are half-timbered, and others of mellowed brickwork. Malt Mill Lane is probably one of the most attractive streets, but in the industrial past it had needle-making works. We found numerous places to eat before moving on to Coughton Court at 2 pm.

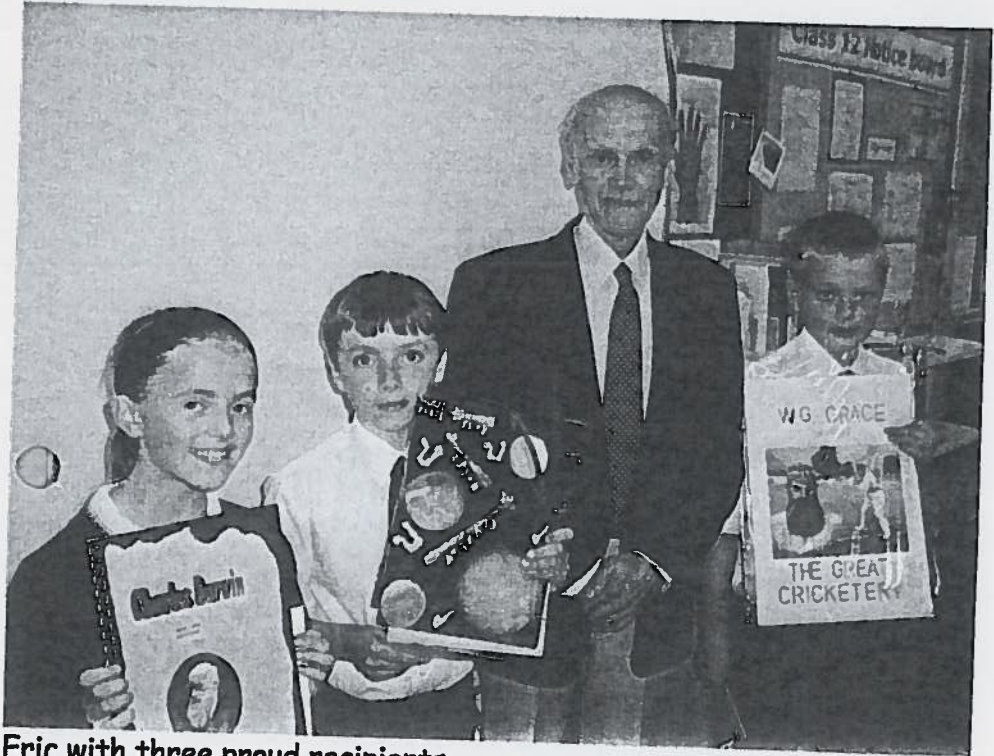
The Court is a fine Tudor house, and home of the Throckmorton family since 1409, an influential Catholic family that has witnessed some defining moments in history. There is a comprehensive exhibition about the 1605 Gunpowder Plot. The estate has two churches - the old parish church, and one of the first private Roman Catholic churches to be built in England in the 19th century.

The house has an interesting collection of furniture, porcelain, and family portraits and many small curios. From the top of the Gate House is a panoramic view over the gardens and the landscape beyond. The grounds include a formal walled garden and labyrinth, neatly clipped yews and flower-filled borders, and a woodland walk.

NEWS FROM THE SCHOOLS

Local History Society Prize for Leckhampton Primary School

At the end of term your Chairman had the pleasure of presenting book tokens to pupils of the Primary School whose history projects had shown special merit. The awards were funded from the Society's donation in support of history teaching at the school. The standard of work produced by all the children was exceptionally good and dealt with the lives and achievements of Edward Wilson, Isambard Kingdom Brunel, Edward Jenner, W G Grace, Charles Darwin and Florence Nightingale, among others.



Eric with three proud recipients.

Naunton Park Primary School Centenary Celebrations 9th-13th July
The school was open to visitors to be guided on a school tour and to view the large collection of photographs and archived material that was displayed in chronological order within the building. The celebrations ended with a pig roast on Friday evening. This was attended by over three hundred former pupils, former staff and present staff and was a truly memorable occasion.

Centenary of The Central Secondary School, Gloucester Road
October.

There will be a celebratory event at Cheltenham Bournside School and Sixth Form College in October. The school would be delighted to receive any old photographs and memorabilia for their exhibition. Please contact the school on 235555.

PUBLICATIONS

'Eminent Cheltonians and their memorials at Leckhampton'

This is the title of an article written by Eric Miller in the latest Cheltenham LHS *Journal*. It is the culmination of several years' research and deals with some fifty people, of whom some are well known and others to be. Copies of the *Journal* are available from Eric, or at meetings, price £3.50. Eric will also be giving a talk along similar lines to the Cheltenham LHS on 20th November.

Reprint of 'Leckhampton 1894 - the End of an Era'.

Arrangements are in hand to reprint this, the Society's first publication, which has been out of print for some years. It should be ready by the Autumn, at the same price as previously (£3.50). Members who have joined more recently will be particularly interested to purchase a copy.

DATES FOR YOUR DIARY

Cheltenham Heritage Open Days

6th-9th September

Details of the two Architectural Heritage walks and numerous properties that are open this weekend can be obtained from the Tourist Information Centre tel: 522878 or www.visitcheltenham.info

 S Grimson & the Barnsleys David Walton
8.00 pm 20th September

LLHS Members' Evening The St Philip and ST James' area
8.00 pm 18th October

Friends of Leckhampton Hill and Charlton Kings Common (FOLK):
Wednesday 14th November 7pm at Leckhampton Primary School
'Leckhampton Hill' - talk by Eric Miller

Cheltenham LHS: Tuesday 20th November 7.30 pm in the Council Chamber, Municipal Offices
'Eminent Cheltonians' - talk by Eric Miller

TUARY

Derek Brown, who died in July, was a long-standing and dedicated member who still kept in touch even though he had moved away from Leckhampton. He had revealed his fondness for the area in the booklets *Our Hill* and *In the Shadow of the Hill*, which he co-edited with Everard Caudle.

MEMBERSHIP MATTERS

As always, guests and prospective members are very welcome at our meetings. However, we do expect residents in the area to join after attending, say, two or three meetings as a visitor. The Membership Secretary, David Lyall tel. 512313 membership@llhs.org.uk has the necessary application forms.

Back numbers of *Smoke Signal* are available for members to purchase and we also have a supply of *Research Bulletins* and other publications, which are usually on sale at monthly meetings or from the Research Coordinator.

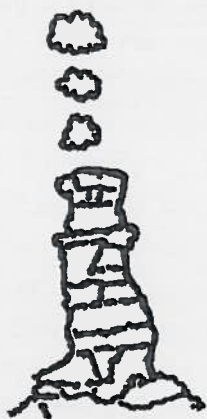
The Society's website address is www.llhs.org.uk.

The Research Coordinator is Eric Miller, 20 Collum End Rise, Cheltenham GL53 0PB,

Tel. 526461 ehmiller@talktalk.net

Data Protection Act. Details of members' names and addresses are stored on a computer file and will be used solely for addressing envelopes for distribution of *Smoke Signal* and other information and literature. This information will not be divulged to any outside agency.

Copyright. Unless stated otherwise, copyright of articles and illustrations remains with the author or artist concerned or with the Editor. The Society does not accept any responsibility for statements and opinions contained in this newsletter, which are those of the author alone, but corrections or additions are invited.



Smoke Signal

Number 59, Spring 2008

Editor: Lorna Robson

Tel: 01242 242996

FROM THE CHAIRMAN.

As we near the end of our 15th season, we are preparing for our AGM. There we must elect two new committee members. Amy Woolacott, having held the post of Honorary Secretary for 13 years, now wishes to retire, as does Rick Kedge, another long-standing member, who has arranged our programme for several years. I too am retiring, having been Chairman (during two separate spells) for nearly half of the Society's existence. I am pleased to say that Mike Rigby is willing to stand for election in my place, thus ensuring the Society's continued prosperity in the short term, but if we are to survive another 15 years of independent existence, we must rely on 'fresh blood' to help in the day-to-day running. The Hon Sec and other committee members do not have to be historians: perhaps the idea might appeal to the spouse of an active member?

LECKHAMPTON LOCAL HISTORY SOCIETY

Affiliated to Cheltenham Arts Council

To celebrate the anniversary, I have invited Dr Steven Blake, well known for his outstanding knowledge of the history of locality, to give a special lecture at the Village Hall, which will be open to a general audience. The date and title are given in the enclosed future programme, and arrangements will be advertised nearer the time.

Looking to the wider community, we have promised a donation of £500 to Naunton Park Primary School for the purchase of books and/or other teaching aids relevant to the study of history. We did the same for Leckhampton Primary School last year, and we have offered £50 again this year for prizes for history projects. Such donations have been accepted with gratitude and enable the schools to buy items that would otherwise be on an unattainable wish list.

Members may also recall that the Society made a small contribution towards Cranham LHS's aerial survey, as a result of which the northern escarpment of Leckhampton Hill was included. We have just received the data, which will take some time to interpret, as it involves laser imaging as well as straightforward photography. Ideally, we should like to say more about it in the forthcoming *Research Bulletin* - any volunteers for this fascinating task?

Eric Miller

RECENT MEETINGS

Cranham Potteries 13th December

Janet Whitton

Jan gave us the potted history of the potteries at Cranham which thrived here from 1696-1911. Cranham supported many potteries; there was a stream, a wood nearby for fuel and excellent blue clay to be found here. She told us of tragic accidents within the trade, family feuds and the day to day hardships and then how the introduction of enamel ware signalled the end for the once thriving pottery industry. Besides the slides showing examples of Cranham pottery (exhibited in Gloucester and Stroud Museums), archive village scenes and modern views, Jan had set up an extensive display of photographs, old maps and pottery to accompany her talk.

A digital tour of Leckhampton-The 1850s map. 17th January

Geoff North

Eric Miller welcomed Geoff back to give a second talk about the locality and the 1850's map. Every seat was taken and we were in for a very interesting and fascinating evening. This time we set off from Bath Road and made our way to the St Luke's area,(not literally of course!). Geoff set the scene; the Cheltenham Ladies College opened in 1854, St Luke's Church was consecrated on 7th November. Originally, it had been called the New Church of St. Luke and the church had featured in The Illustrated London News in January 1885. Geoff talked about and show slides of maps, including John Oglebury's map, a circular map, The Cheltenham Hundred and the Railway Map 1835.

The Old Town Survey 1885-1857 was in response to the General Board of Health at Whitehall advising the Sewerage & Drainage Committee of the need for an accurate detailed plan of the town "as a foundation for the laying out of one of the most economical and efficient plans". In 1854, Henry Dangerfield, the Town Surveyor wrote: 'the plan will constantly be referred to and will be useful for various purposes and it will remain after those works are completed a map of reference, all additions and alterations being made to it as they actually occur'. When The Cheltenham Local History Society Millennium 'Map' Project was begun, Geoff found that surveyors from the water, gas and electricity boards, plus others, were indeed using the map and marking where their services would run on the original eighty-four large sheets of map! (More can be read about this project in The Cheltenham Local History Journals Nos. 18 and 19.)

Geoff's appreciative audience thoroughly enjoyed close ups of each area from photographs, old post cards and cartoons. The area had been known as Sandford prior to the church here and Sandford Park was opened in 1928.

Geoff concluded the evening with an invitation to view the archive material that Elaine and he had brought with them and then read:

"EXTRAORDINARY FALL OF RAIN, THUNDER STORM, AND DESTRUCTIVE FLOODS IN CHELTENHAM AND ITS NEIGHBOURHOOD

On Thursday last a visitation of a most unusual nature occurred in this neighbourhood, causing a widespread alarm among the inhabitants, and inflicting a serious amount of damage upon property in the town...

...not only were the sewers damaged but the Chelt itself was flooded for several hours, and the whole of that portion of the town lying along its banks was laid under water. The rain on this occasion commenced at an early hour on Wednesday evening, and continued throughout the night and during the following day with very slight intermissions....at an early hour on Thursday afternoon the effects of this unceasing of rain began to manifest themselves in various parts of the town....towards 6 o'clock

....the waters of the Chelt bursting the banks along its upper portion and rushing through the town....in a very few minutes the whole of the houses from the Bath Road to Alstone, and occupying a belt of some hundred yards in width, had their basements flooded from 3 to 4 feet in depth!.....the torrent passed Sandford Mill and rushing onward through the Sandford-fields [the area between THIRLESTAIN ROAD and the CHELT] swept over the made ground of Wood's-road [COLLEGE ROAD] in a cascade some 3 feet in depth and immediately spread itself through the "Mitre-fields" [OLIO LANE area], sweeping down fences, pig-sties, hayricks and garden produce in its onward progress!...the torrent rolled across the Bath-road, Cambray, Rodney-terrace, and Regent-street to the Promenade...

.....
...At the Sandford Mill, the damage would have been much more serious if Mr Davis, the occupier of the mill, had not with great presence of mind, cut away portions of the embankment so as to direct the rush of water into the adjoining meadows....Mr Valentine Cooper of the Bell Inn, Bath-road was a great sufferer...Mr Dale,

also, who has gardens in the neighbourhood, has had his growing crops washed away, and a number of cucumber frames carried into an adjoining hedge. His loss, altogether, will be about £50. Mrs Cox, a laundress, was also a severe sufferer....The large steam mill of Messrs. Atwood was much injured and a large quantity of wheat and flour was damaged or otherwise destroyed....The workshops and timber-yards of Mr Rainger [1863 C Rainger listed as 'builder and architect' 10, BATH PARADE] suffered from the sweeping current: a quantity of timber was carried away and much of it has been picked up and purloined....Mr Ruck of Montpellier Baths had a complete flood, 4 feet deep, all over his basement story of 22 rooms, spoiling the fixtures and fittings to a very serious extent.

The damage done....will probably not be compensated by an outlay of £50. The wreck of the property in Mr Ruck's establishment was piteous to behold. The carpets in the various rooms were spoiled by the mud and dirt; the tables, wash stands, with their neat furniture, the looking glasses and chairs, floated about in the water for hours, until their parts became separated by the damp, and most of them were irretrievably injured. In Sandford street the stream rushed down with the velocity of a river, filling the lower rooms up to the ceilings, and inflicting great damage upon the inhabitants.... The whole Bath-road, from 6 to 8 o'clock, was impassable for foot passengers, but several flies were to be had, in which persons could make their way over for a "consideration", the water rising up to the girths of the affrighted horses, and in some cases over the wheels of the fly. In the bend of the stream, between Barrett's Mill and the Bath-road. The water rushed along in foaming eddies, threatening instant destruction to the frail tenements on either side; and such was its force, that the large garden of Ollney Lodge [?] was flooded, and the water rushed through the doorway into the Bath-road in a torrent 2 or 3 feet in depth....At Birdlip House [BATH ROAD], the lower rooms were 8 feet deep in water...A spacious greenhouse and

conservatory, situate behind the **Cambray Spa**, was knocked down, 3 walls being carried away from under the frame work; all the valuable shrubs and plants were destroyed, both in the conservatory and in the garden; the estimated loss to the owner (Mr Hodges, of the Imperial nursery) being set down at £150. The fencing all round the Spa was also swept away, and the basement story damaged by the deposit of mud and water...The gardens of the Ladies' College, **Cambray house** [*on site of current CAMBRAY COURT*], were likewise under the water....

THE AGGREGATE AMOUNT OF DAMAGE [*for all areas*]....cannot fall far short of £10,000.....and when we consider this loss was the result of a few hours' rush of an unusual quantity of water over a partially-choked up watercourse, usually found sufficient for its purpose, we can only come to the conclusion that human foresight is insufficient to provide against such accidents. At the same time, we ought to be thankful that there has been no loss of life or limb in this fearful visitation.....Many persons congratulated themselves that one good result will follow from the flood, namely, that it has effectually destroyed the rats by which their premises were infested.....and of the water works, one good result is anticipated, namely, that the heavy weather of late has afforded a good auxiliary supply in "a time of need".

This was not a report from the Echo in July 2007, but printed in The Examiner August 1885! Not a lot has changed.

Bring and Tell Members' Evening

21st February

The Members' Evening fielded a photo quiz of familiar (or not) scenes around Leckhampton, put together by Eric Miller who was unable to attend. Only a few pictures stumped those who attempted the quiz. 'Bring & Tell' resulted in yet another motley collection of items. Members should be congratulated on continuing to bring things of

interest; some had wartime connections - a WWII stirrup-pump, trench-art miniature replicas of WWI officers' caps - British and German, and details of a Cheltonian who served in the US Army in the 18thC. There was an interesting booklet about Cheltenham in the 1950s, and some early postcards showing local scenes and highlighting the great efficiency of the Post Office delivery service. There was also a large earthenware jar of unknown purpose, a scrapbook, which could be looked at time-and-again, and a hand-held oil lantern for railway platform and marshalling yard signalling. Older items included a 19thC lead 'token' and some Roman & Iron Age coins.

Ancient Woodlands

20th March John Heathcott

There were several unfamiliar faces in the audience for this very informative and fascinating talk. There are nineteen ancient woodlands, (all open to the public), in Gloucestershire, making it one of the most wooded counties in the U.K. Long before our country became an island there were only thirty-three native trees. Amongst these were the yew, Scots pine, juniper and the lime, the lime was the commonest tree in Gloucestershire. The silver birch was the first tree to be introduced after the Ice Age and more exotic trees, which threatened the mature native trees, were introduced after the 1600's. A map dating from the reign of James's 1, showed there to be thirty eight forests in England. The Forest of Dean was the King's hunting ground and later was stripped of much of its wood, as timber was required for the ship building trade. After W.W.2, 10,000 acres of conifers were planted. There are fifty-eight square miles of forest here for us all to enjoy. The Woodland Trust

www.woodlandtrust.org.uk manages ancient woodlands, which support a huge diversity of wildlife and plant life. John had large collection of beautiful slides including trees along the banks of the River Wye in Lady Park Wood, rare woodland plants, butterflies and tree scenes and views. The evening was full of interesting facts and one that I'll remember each time I drive past Michaels Wood Service Station on the M5, is that its stands in Mukylwood(e)!

Dates for your diary:

15th May **AGM followed by talk about Frampton-on-Severn**
Rose Hewlett

The Woodland Trust

19th April **Why is spring arriving early?**

22nd May **Discover ancient trees**

7th-8th June **Introducing ancient woodland**

Contact: All Age Learning at The University of Gloucestershire 01242
714940 or email: pittvillestudios@glos.ac.uk

20th May **Cheltenham History Society (AGM) followed by talk**
Voluntary Aided Hospitals Geoff North
7.30pm in the Council Chamber Municipal Offices. Arrive early to
ensure a seat!

Sunday 8th June, 2.30 pm in St Peter's Church, Leckhampton.
Eric Miller "Eminent Cheltonians and their Memorials at
Leckhampton ", using the actual stained glass and monuments as
illustrations, followed by a tour of the churchyard. Entrance £2.50 to
include refreshments."

Montpellier Gardens 28th June The Cheltenham History Society will
be displaying archive material in the marquee.

2.00pm 20th July Local History Afternoon St Andrews Church,
Cheltenham.

18th September **Leckhampton Local History Society** Cyril
Richardson *Exit the 'Albermarle'; enter prefabs.*

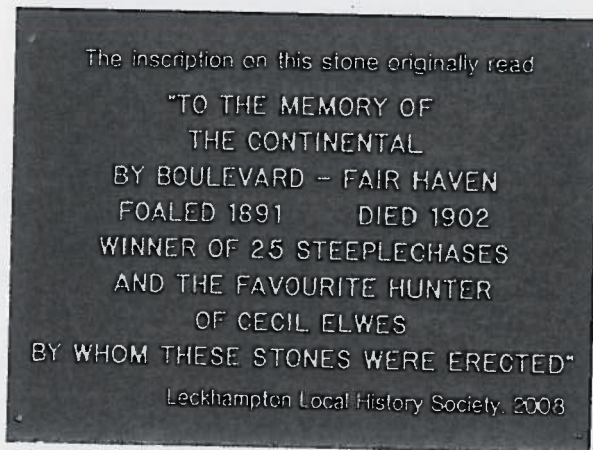
2.30pm. 26th October Leckhampton Local History Society 15th
Anniversary Talk.

Dr. Steven Blake Copper, Steel and Stone Leckhampton
Village Hall.

LOCAL INTEREST

Society replaces plaque

The original plaque, inscribed 'the horse's grave' in a field (Crow Park) above Leckhampton Court is badly eroded and the inscription is now barely legible. The new plaque will be fixed to the side of one of the stones.



Jenner Gardens

There is some good news to report from The Friends of Jenner Gardens. This recently-formed group have been successful in their applications for grants. Late last year, the Big Lottery Fund Breathing Spaces awarded £10,000 which is being matched with a further £10,000 from Cheltenham Borough Council's Green Environment. Further grants of £40,000 from The Gloucestershire Environmental Trust and £10,000 from The Summerfield Trust have now been confirmed. These grants will enable the first phase of works to start in April. This will involve commissioning stonemasons to repair and level the gravestones. An archaeologist will also be commissioned to undertake a watching brief while work is in progress. You might like to look at the Friends of Jenner Gardens website,

www.friends-of-jenner-gardens.org.uk.

You will find lots of interesting information, including a list of all the burials in the Cheltenham Chapel Burial Ground and details of the inscriptions on the gravestones. You will also be able to see a variety

of stunning photographs relating to the project and the latest position regarding the fund raising and updates as the work progresses.

Mike Rigby

EXTRACTS FROM OLD NEWSPAPERS

Medical Officer's Annual Report for Leckhampton

The health of the district has been very good indeed. A mild form of scarletina had hovered about some parts of the district, affecting mostly young children, but none of the cases required removal to hospital, and all were successfully treated in their homes. In the Delancy Fever Hospital, 50 cases odd scarletina had been relieved, but no infection had been traceable from that institution into the district in which the building was situated. The board have taken steps to remove any accumulation of ashes and filth and to adopt the principal of a regular collection being made, which greatly adds to the sanitary improvement of Leckhampton, and removes a blot from one of the fairest rural districts in the British Isles. Diarrhoea had been very rare in the district during the year and only two deaths occurred from that disease shows a falling off, so that infantile diarrhoea, which has always supplied a considerable contingent of disease, has, during 1883, been almost absent. The Medical Officer congratulates the Board on the greatly improved condition of Leckhampton District, both as regards its sanitary state, drainage works and water supply.
Echo 5th February 1884

R-100 Over Leckhampton

The great airship was seen over Leckhampton Hill about 09-40 morning on her return journey from Canada-it was flying low and appeared to be using only 2 of her engines. Thousands of Cheltonians paused in the morning routine to catch a glimpse of the dirigible. She towered against the sky above the hill for an instant and then disappeared moving steadily towards Oxford. It sailed gracefully across a cloudless sky like a gigantic silver fish.
Chronicle 23rd August 1930

SUMMER OUTING

This year's outing on Tuesday 22 July, arranged by the Charlton Kings LHS, will be to Marlborough and Avebury, leaving from outside the Co-op in Leckhampton Road at 9.00 am. The cost is £12 to include the coach and a tour of the Merchant's House at Marlborough. We can make our own arrangements for coffee, lunch and tea. Two hours will be spent at Avebury, where entrance to the Stone Circle is free, and attractions in the village include the ancient church of St James, the Henge Shop, a National Trust Shop in the Old Granary and the Circle Restaurant. The National Trust owns (1) Avebury Manor and Gardens and (2) the Keiller Museum and Great Barn, so members should remember to bring their cards if they would prefer to visit any of these places. For non-members the charges are around £4 in either case.

To be sure of a seat on the coach, please send your cheque direct to Ann Hookey using the enclosed form, to arrive not later than 31 May.

OBITUARIES

We regret to learn of the death of Pauline Bradstock. She had a passion about collecting information on the history of the area and was generous in her willingness to share it. She was the moving force behind the outstanding exhibition of memorabilia at Emmanuel Church in 2005 and the souvenir book based upon it. She will be greatly missed and we offer our condolences to Ivor.

Note from the Editor

At each meeting, I take a few notes, which I hope may be useful for members, if only to alert them to what they have missed! This issue is a "good read" because I have included newspaper snippets from Alan Gill, the flood news from the Examiner from Geoff North). Please do continue to send articles etc. to share with other members.

Please remember to bring your agenda to the AGM

MEMBERSHIP MATTERS

As always, guests and prospective members are very welcome at our meetings. However, we do expect residents in the area to join after attending, say, two or three meetings as a visitor. The Membership Secretary, David Lyall (tel. 512313), membership@llhs.org.uk has the necessary application forms.

Back numbers of *Smoke Signal* are available for members to purchase and we also have a supply of *Research Bulletins* and other publications, which are usually on sale at monthly meetings or from the Research Coordinator.

The Society's website address is www.llhs.org.uk.

The Research Coordinator is Eric Miller, 20 Collum End Rise, Cheltenham GL53 0PB,

Tel 526461 ehmiller@talktalk.net

Data Protection Act. Details of members' names and addresses are stored on a computer file and will be used solely for addressing envelopes for distribution of *Smoke Signal* and other information and literature. This information will not be divulged to any outside agency.

Copyright. Unless stated otherwise, copyright of articles and illustrations remains with the author or artist concerned or with the Editor. The Society does not accept any responsibility for statements and opinions contained in this newsletter, which are those of the author alone, but corrections or additions are invited.



Smoke Signal

Number 60, Autumn 2008

Editor: Lorna Robson
Tel: 01242 242996

IMPORTANT DATE FOR YOUR DIARY

Leckhampton Local History Society
Celebrate our 15th Anniversary at
2.30pm on Sunday 26th October 2008
at Leckhampton Village Hall, Church Rd.

Dr Steven Blake
George Rowe and the 1845 Illustrated Cheltenham Guide.

Free admission for members.
£1 for non-members (to include light refreshments).

LECKHAMPTON LOCAL HISTORY SOCIETY
Affiliated to Cheltenham Arts Council

GEORGE ROWE, THE 1845 ILLUSTRATED CHELTENHAM GUIDE

Among the many guidebooks to Cheltenham that were published during the late 18th and 19th centuries, George Rowe's *Illustrated Cheltenham Guide* is outstanding. In a series of four walks, Rowe leads his reader on a tour of the early Victorian town, looking at villas and terraces, churches and chapels, schools and collages, and - above all - at its many commercial premises.

This talk will look in detail at Rowe's *Guide*, comparing the town then with the town now, and in particular identifying buildings and businesses that have survived from 1845. It will also consider the career of the book's author and publisher, George Rowe (1796- 1864), who was a leading figure in the life of Cheltenham for 20 years, before emigrating to Australia in 1852 to pursue a new career as a prospector and portrait painter in the gold fields of Victoria.

DATES FOR YOUR DIARIES

Charlton Kings LHS

Tuesday October 28th, 7.30 in the Baptist Church, Charlton Kings

Mr Henry Elwes - '*The Elwes Family*'

Members of Leckhampton LHS are encouraged to hear this talk, in view of the Elwes family's connection with Leckhampton Court and involvement in local life.

Leckhampton Local History Society

20th November Peter Simkins

Advance to Victory - 1918

Ninety years ago, between 8th August and 11th November 1918, the British Army won the greatest series of victories in its entire history - although those successes have today been largely forgotten by the general public. In this talk, Peter Simkins - one of our members - will outline the course of the final Allied offensive of the Great War and examine some of the factors which contributed to the ultimate success of the British and Dominion forces under Field Marshal Sir

Douglas Haig, covering tactics, technology, command and logistics. Peter will also talk about the human experience of battle in 1918 and discuss the personalities of some of the commanders most closely involved - including one or two with Cheltenham connections. In doing so, he hopes to explode some long-held myths of the First World War.

SUMMER OUTING TO MARLBOROUGH AND AVEBURY

Members of the CKLHS and LLHS left for their annual outing on 22 July - one of the few fine days of the summer. On arrival in Marlborough we visited the Merchant's House, the home of Thomas Bayly, a silk merchant. It is a fine brick and timber building, rebuilt after the Great Fire of Marlborough of 1653. The rooms are oak-panelled and some have wall paintings.

The great stone circle at Avebury is the largest in Europe and is probably 3,500 years old. Many of the stones were re-erected in the 1930s by Alexander Keiller, the marmalade millionaire. Other attractions were a display in the Barn Gallery telling the story of the stones and Avebury Manor and Gardens, owned by the National Trust

NEWS FROM THE SCHOOLS

The Society has made donations of £50 each to Leckhampton and Naunton Park Primary Schools, to buy book tokens as prizes for the most outstanding history projects prepared by Year 6 pupils. The overall standard of the entries was impressive, dealing with celebrated people such as Edward Jenner, Edward Wilson, Isambard Kingdom Brunel, Florence Nightingale, Mary Seacole and WG Grace.

Eric has mislaid his copy of the 1886 Ordnance Survey map covering the lower end of Leckhampton Road, roughly from the weighbridge to Tinderbox Lane. If anyone has borrowed it, please return it, as it is needed for a new article!

MEMBERSHIP MATTERS

As always, guests and prospective members are very welcome at our meetings. However, we do expect residents in the area to join after attending, say, two or three meetings as a visitor. The Membership Secretary, David Lyall (tel. 512313), membership@llhs.org.uk has the necessary application forms.

Back numbers of *Smoke Signal* are available for members to purchase and we also have a supply of *Research Bulletins* and other publications, which are usually on sale at monthly meetings or from the Research Coordinator.

The Society's website address is www.llhs.org.uk.

The Research Coordinator is Eric Miller, 20 Collum End Rise, Cheltenham GL53 0PB,

Tel 526461 ehmiller@talktalk.net

Data Protection Act. Details of members' names and addresses are stored on a computer file and will be used solely for addressing envelopes for distribution of *Smoke Signal* and other information and literature. This information will not be divulged to any outside agency.

Copyright. Unless stated otherwise, copyright of articles and illustrations remains with the author or artist concerned or with the Editor. The Society does not accept any responsibility for statements and opinions contained in this newsletter, which are those of the author alone, but corrections or additions are invited.